

Growing Together



About our Growing Together programme





Community Gardener, George planting some seeds with some young gardeners

Who are we?

The Growing Together programme exists to promote access to green spaces for Alliance Homes customers and others within the community.

We offer opportunities for engagement and firmly believe that spending time together outdoors promotes health and well-being in the individual, and strengthens community connections.

Where are we found?

The Growing Together programme operates primarily from Coleridge Road Community Gardens (CRCG), Alliance Homes' flagship outdoor community hub, situated within the Bournville community in Weston-super-Mare.

The Community Gardens are within 2 miles of approximately 30% of Alliance Homes' housing stock and as such they are ideally suited for community activities for our customers. CRCG provides a safe, enclosed, tranquil setting for community-led and facilitator-led activities, including craft workshops, practical volunteering, communal allotment gardening and social events.

The site (0.3 acre) is equipped with a basic field kitchen under a timber framed shelter, 5 large raised beds for food production and cut-flowers, sensory gardens and a polytunnel. In addition, there is a mud-kitchen and outdoor play opportunities for children, and habitats managed for wildlife. Produce is shared amongst volunteers and within the local community, free of charge.



Why are we here?

The neighbourhoods which surround Coleridge Road Community Gardens, fall within the 1% most deprived areas nationally, and accordingly, a range of health, education and well-being needs are reported.



Local family enjoying the garden

Alliance Homes has recognised the value in a strengths-based approach to promote community resilience and improve health and well-being for those living in the area.

What do we offer?

The Growing Together programme provides outdoor engagement opportunities for everyone.

Drop-in volunteer sessions run every week throughout the year. Provision is made, wherever possible, for those with additional needs. We recognise that horticultural therapy can improve memory, cognitive abilities, regulate emotions and foster social connectedness and mental well-being.

There are learning opportunities for young people, with weekly activities for pre-school age children and college students, as well as regular use by youth groups, including the Young Carers service, and South Weston Activity Network.

Seasonal gatherings facilitated by Alliance Homes and local partner organisations provide opportunities for community members to enjoy the beautiful setting with friends and family. Having a safe and welcoming outdoor space to relax in is important, and a fantastic community asset, particularly for those without access to a garden at home.



Community Gardener, Spike at Coleridge Road Community Gardens

Our purpose

To provide community members with outdoor engagement opportunities which promote physical and mental well-being, and foster community connectedness.

Our vision

For every member of the community to have the opportunity to positively engage with their outdoor green spaces.

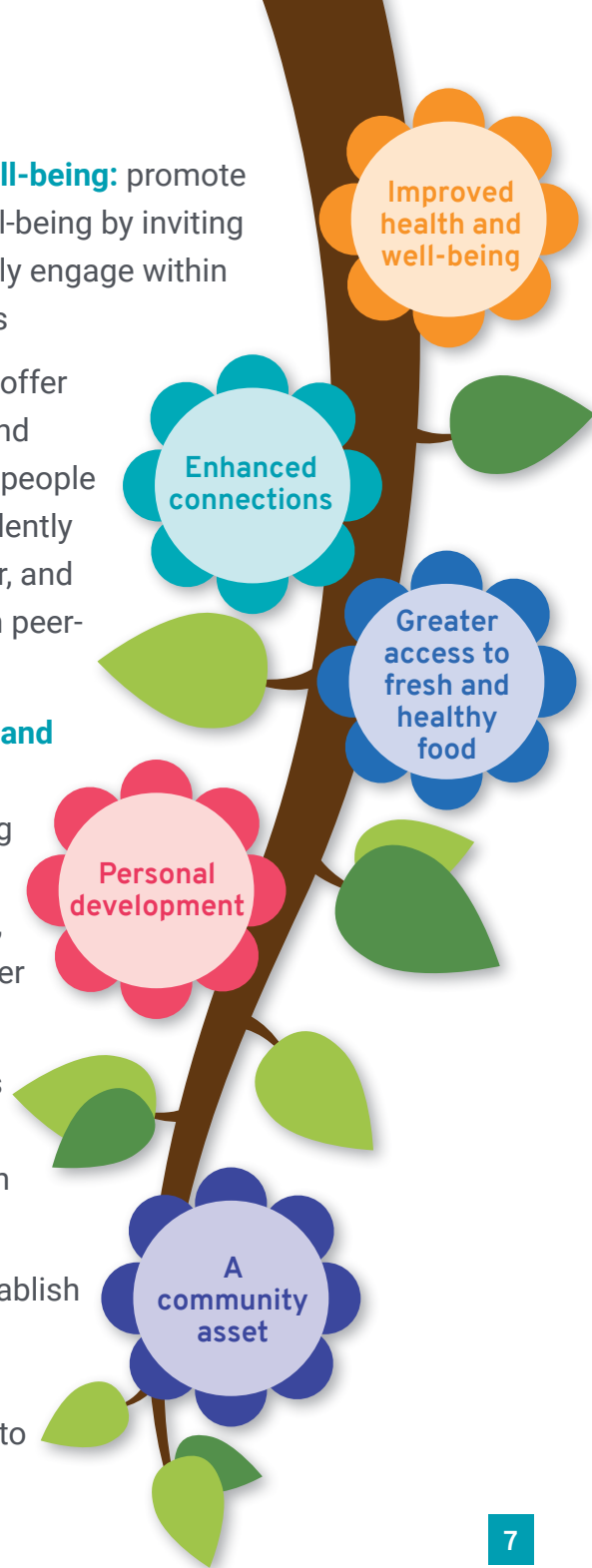
This vision aligns with wider commitment from Alliance Homes Group; work is underway at an organisational level to capture this commitment and ensure that it is woven in to all future asset acquisition and development schemes.



Community Gardening Projects Manager Rachel with community gardeners

Five key goals

- 1 Improved health and well-being:** promote physical and mental well-being by inviting the community to actively engage within nature on a regular basis
- 2 Enhanced connections:** offer a trusted environment and “bumping space” where people can make friends, confidently engage with one another, and feel empowered through peer-to-peer support.
- 3 Greater access to fresh and healthy food:** support community food growing through facilitated gardening opportunities, and sharing food together
- 4 Personal development:** To provide opportunities for skills sharing and learning, not just through horticultural activities.
- 5 A community asset:** establish CRCG as a community place-maker, one that residents feel confident to engage directly with.



Venue hire

Coleridge Road Community Gardens is available to hire as a private venue, for one-off events, and parties, or for block bookings for weekly groups. We have previously hosted photography courses, craft groups, youth clubs, metal welding workshops, forest school events and pizza parties.



Rachel making pizza

There is a basic outdoor kitchen, with gas stove, kettle, running water, electric sockets, tea and coffee and well-equipped kitchen. We also have a pizza oven available for use.

You'll find an organic garden rich in wildlife and interest, a campfire area, a beautiful, versatile 10m x 10m open sided timber shelter, which is kitted out with fairy lights, trestle tables and chairs for 20 people under cover, outdoor seating, and a compost toilet (with access via 3 steps).

Bookings and viewings can be made by email	communitygardening@alliancehomes.org.uk
Capacity	80 people (20 seated under cover)
Availability	Monday to Sunday, 9am to 9pm
Address	Coleridge Road Community Gardens, between 65 and 67 Coleridge Road, Weston-super-Mare, BS23 3UJ

2024 Venue hire rates

- Standard Rates:** for profits, commercial, and government organisations, charities, funded groups from outside the BS23 area.
- Reduced Rates:** funded groups from Weston-super-Mare (and adjacent areas) which have a focus on strengthening communities and nature connections; not-for-much-profit groups.
- Local Community Rates:** local community groups and gatherings from Bournville, Coronation or Oldmixon, with no paid staff.

	Standard rates	Reduced rate	Local community rates
Per hour	£15	£12	By donation
Half day	£45	£30	By donation
Full day	£90	£55	By donation



Some of our facilities

How to hire our venue

- A hirer's fee is required at least one week in advance of the event. 10% off block bookings of 5 weeks or more.
- All revenues go directly towards services and events for those who would benefit most within our communities.
- For chargeable bookings, we will send an invoice by email. Payment by BAC, or cash payments can be made if BACS payments are not possible.
- If you are unsure of the tariff most appropriate to you, please ask.
- For more information, email communitygardening@alliancehomes.org.uk or call us on 07711 373607.
- Find us on facebook: **Growing Together - Alliance Homes**



Our Gardening Sessions

Mondays

1 – 3.30pm @ Great Rhyne Gardens Allotment



Community Gardener George leads a small group for gentle gardening. We grow fruit and veg to share and take home. The kettle goes on at 3pm for a well-earned cuppa. Please phone in advance because the gate to the allotments behind Windwhistle School (by the footbridge) needs to stay locked.

Tuesdays and Thursdays

10 – 4pm @ Coleridge Road Community Gardens



Join our drop-in sessions, for a variety of gardening and site maintenance tasks at our glorious flagship Community Garden. Grow your favourite vegetables, flowers and fruit, lend a hand with repairs or just pop by for a chat and a cuppa! There's always a choice of activities. Refreshments provided. Stay as long or as little as you like. Sessions with Spike and George.

Thursdays

10 – 12pm at Bournville Chocolate Garden and Shops



Join Spike to help weed, tidy and tend to the plants in the tranquil Chocolate Garden and the flowerbeds by the shops.

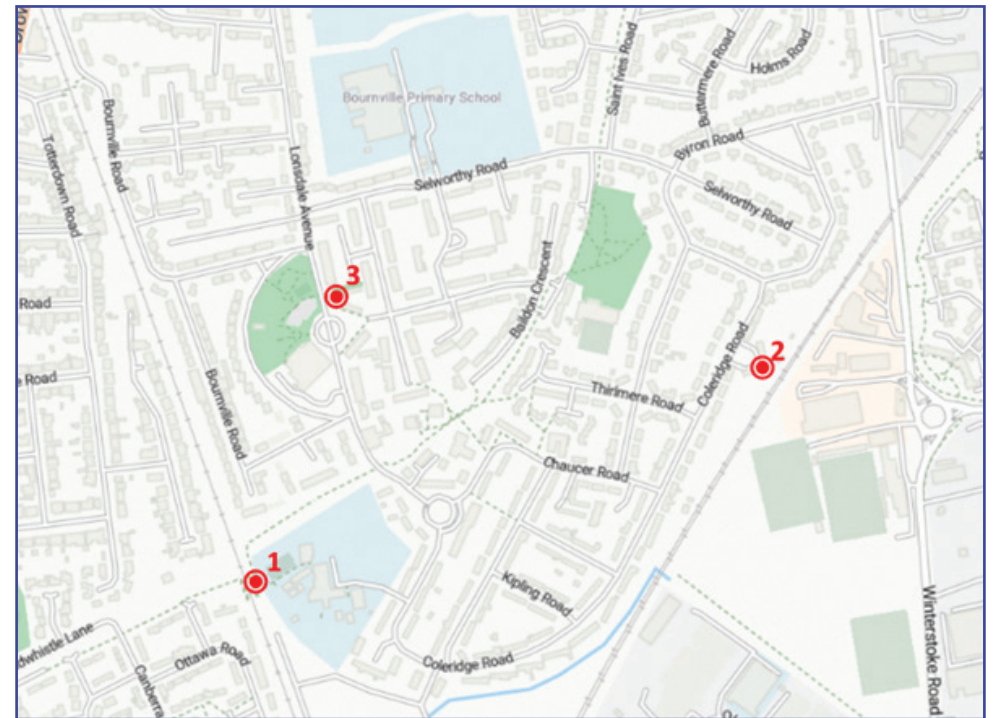
New faces always welcome!



Bournville Chocolate Garden

Our Gardening Sessions

Where we grow



1. **Great Rhyne Gardens Allotment:** Meet by the locked allotment gates, behind Windwhistle School by the footbridge. Access from Windwhistle lane cycle/footpath.
what3words: [///topped.pretty.drip](#)
2. **Coleridge Road Community Gardens:** Between and behind numbers 65 and 67 Coleridge Road, BS23 3UJ. Please park considerately if travelling by car.
what3words: [///trading.increased.mermaids](#)
3. **Chocolate Garden and Bournville Shops:** Meet at the Bournville Chocolate Garden, Lonsdale Avenue, BS23 3SQ.
what3words: [///winter.moons.cuts](#)

Testimonials

“Thank you for your support. You’ve helped me regain my independence as well as giving me something to look forward to each week.”

Steve

“My children love to come here. Their confidence has increased so much, and it’s great to have a safe, outdoor space that they’re free to explore in. They love picking and eating the strawberries.”

Helen

“I love to garden but it can be quite a lonesome activity now that my husband has passed away. At Coleridge Road Community Gardens I can enjoy being productive in the garden alongside others. I don’t always feel very chatty, but it’s great to garden alongside others.”

Sharon

“I never knew this place existed but I’m so happy to have found it. I always leave here more grounded, happier and calmer.”

Karoline

“The food aspect is a really important part of the community gardens for me. I love to get creative with my cooking, according to the seasons and what’s ready to harvest in the gardens. I have enough roasted pumpkin seeds to last me through to next year, and I love the fresh winter greens in stir-fries.”

Faz

“Thank you for creating such a warm and welcoming space for our learners. They have gained valuable experience and development important life skills. Thank you again, keep being awesome”

Weston College Extension Studies Tutor

communitygardening@alliancehomes.org.uk
07711 373607
tinyurl.com/community-growingtogether

